

# Holiday



12  
EASY DIY  
PROJECTS







# MAKING SPIRITS *Bright*

ADD A LITTLE  
*Holly-Jolly*  
TO YOUR HOLIDAYS

with the festive style of quick and easy décor, created with FloraCraft® Make it: Fun® Foam. From caroling birds and noel gnomes to friendly snowmen and wintry wreaths, just choose a favorite design, follow the step-by-step instructions in these pages, and create your very own fa-la-la-la-lovely look!



Make It: **FUN**®





Make It:  
Fun®

# Holiday

## TABLE OF CONTENTS

Felt Caroling Birds .....	4
Faux-Wood Slat Stars .....	7
Scandinavian Tree .....	10
Ho Ho Ho Faux-Stitched Wall Art .....	13
Holiday Gnomes .....	16
Let It Snow Wreath .....	20
Sparkling Nativity .....	22
Snowman Door Décor .....	27
Plaid Deer Wall Art .....	30
Shatter-Proof Ornaments .....	34
Snowflake String Art .....	36
Spiral Snowman .....	40
Tips & Techniques .....	43





# FELT CAROLING Birds



## SUPPLIES FOR THIS PROJECT

### FloraCraft® Make It: Fun® Foam:

- ☐ Balls: (3) 3" and (2) 1-1/2" balls

### Other Materials:

- ☐ Felt: Black, White, Red, Blue, Light Grey, Dark Grey and Orange
- ☐ 12 Gauge Jewelry Wire
- ☐ 4mm Half Round Eyes: Black
- ☐ Spray Paint: Black

### Tools:

- ☐ Low-Temp Glue Gun
- ☐ Needle-Nose Jewelry Pliers
- ☐ Ruler
- ☐ Scissors
- ☐ Large Needle



# Felt Caroling Birds

## INSTRUCTIONS:

STEP

1



Cut three 2-1/2" circles from the felt: one red, one white and one blue. Glue a felt circle to each of the 3" balls. This is the bottom of the birds.

STEP

2



Cut the 1-1/2" balls in half and set aside one half for a future project. Firmly press and twist the half ball in place on top of the body until it forms to the rounded shape of the ball. The half ball edges should be flush with the top of the ball. Glue the heads in place.

STEP

3

Cut a 2-1/4" black felt circle. Glue it to cover the head of the white bird body. Gather the excess felt at the back of the head and trim to fit. Glue in place. Cut a 2-1/4" blue felt circle to cover the head of the blue body in the same way. Cut a 2-1/2" x 1-3/4" blue felt triangle. Glue the felt to the front of the head with the top of the triangle standing up to create a feather. Cut smaller triangles from the black, blue and dark grey felt. Glue these feathers to the head one behind the other as shown.

STEP

4



Cut a 2-1/2" circle from red felt. Glue one edge of the circle around the front of the head. Gather the excess at the back of the head. Pinch and glue a pleat at the back to create the look of a feather at the top of the head.

5



# Felt Caroling Birds

## INSTRUCTIONS:

STEP

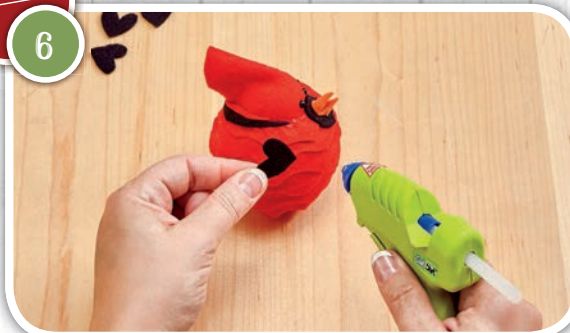
5



Cut  $\frac{3}{4}$ " strips of blue, white and red felt to cover the bodies. Cut a scalloped edge on one side of each felt strip. Starting at the bottom of the body, cut a strip long enough to glue around the 2- $\frac{1}{2}$ " felt circle. Glue the straight edge of the strip around the body, leaving the scalloped edge hang free. Continue gluing strips up the body slightly overlapping as shown. When you reach the top row you may need to cut the felt strips a little thinner to fit.

STEP

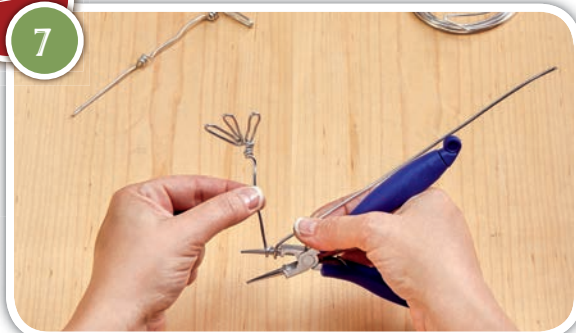
6



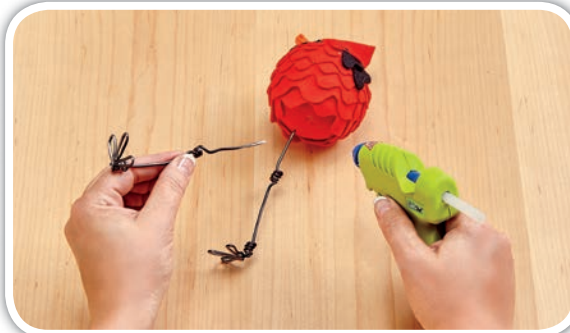
Glue a light grey felt heart to the blue bird for the face and glue the eyes in place as shown. Cut a small black felt oval and glue it to the red bird's face. Glue the eyes just above the black oval as shown. Glue the eyes to the head of the white bird as shown. Glue a small black felt heart to the chest of the white bird. Cut two tiny triangles each from the black and orange felt for beaks. Glue the beaks in place as shown. Cut small hearts from the black, white and light grey felts for the wings and glue in place as shown.

STEP

7



Bend three consecutive 1" loops in one end of the wire. Pinch the loops to shape the foot. At the ankle coil three wraps of wire around the nose of the pliers. Bend the wire straight up the leg to the knee. The distance between the ankle and the knee determines the height of the bird. At the knee coil three wraps of wire around the pliers again. Continue the wire up to the body and cut at the desired height. Allow an extra 2" of wire at the top to glue into the body. Repeat to create three sets of legs. Insert the large needle through the felt at the bottom of the body to pilot a hole for the legs. Glue the legs into the bodies.





# FAUX-WOOD Slat Stars



## SUPPLIES FOR THIS PROJECT

### FloraCraft® Make It: Fun® Foam:

- ☐ Sheet: 1"x 12"x 36"

### Other Materials:

- ☐ FloraCraft Smooth Finish®
- ☐ Acrylic Paint: Black and Metallic Silver
- ☐ Battery Strand Lights: (5) 15-Light Strands
- ☐ 3/4" Screws
- ☐ Self-Adhesive Velcro®
- ☐ Black Tape

### Tools:

- ☐ Low-Temp Glue Gun
- ☐ Wood Graining Tool
- ☐ Serrated Knife
- ☐ Screwdriver
- ☐ Paint Brush
- ☐ Spatula or Putty Knife
- ☐ Fine Grit Sandpaper
- ☐ Ruler

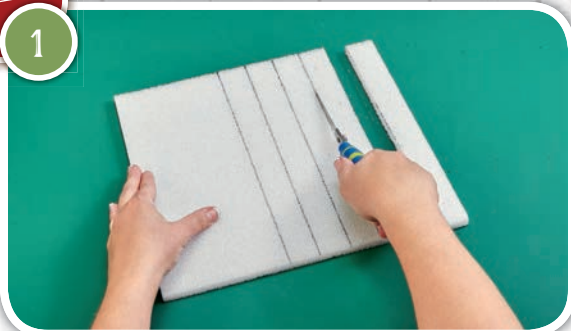


# Faux-Wood Slat Stars

## INSTRUCTIONS:

STEP

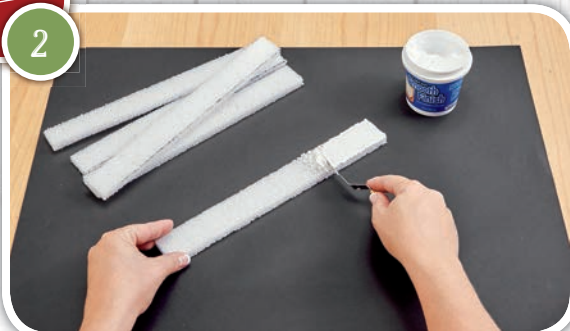
1



Cut the foam sheet in half to create two 18"x12" pieces. Cut five 2"x18" pieces from one half of the sheet. Cut five 1-1/2"x12" pieces from the other half of the sheet. Set aside remaining foam for a future project.

STEP

2



Use the spatula to apply an even coat of Smooth Finish to the ten slats of foam. Apply finish to front and sides of the slats.

STEP

3



Let the finish dry then sand smooth as needed. Apply a second coat to all the foam slats. Let dry and sand smooth.

STEP

4



Apply a coat of black paint to all sides of the ten foam slats and let dry. Apply an even coat of silver paint over top of a black foam slat.



## Faux-Wood Slat Stars

### INSTRUCTIONS:

STEP

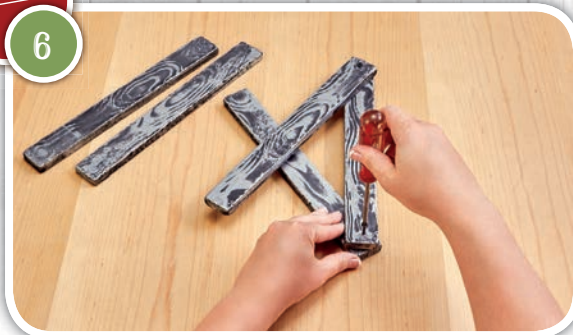
5



While wet, pull the graining tool down the slat through the wet silver paint to create the wood grain look. Rock the tool slightly to create different grain patterns. Repeat on all the foam slats.

STEP

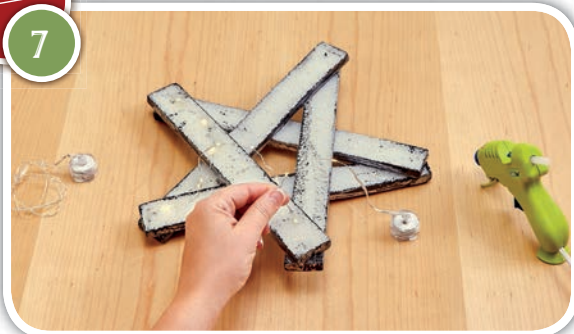
6



Lay the slats together to form the star shapes. Use the screws to secure the slats together.

STEP

7



Use a toothpick to pilot holes for the lights through the points of both stars about  $\frac{1}{4}$ " in from the end. Secure the battery pack in place with Velcro near one point of the star. Glue the Velcro in place on the back. Bend the wire at the first light out from the battery pack. Thread the light through the toothpick hole at the first point. Add a dot of glue at the back to hold the light in place. Tack the light strand along the back of the star and up to the next point. You will have to skip some of the lights as you go around the star. Optional: You can cover the lights that are skipped with black tape. Continue around the star. Add a second strand when needed. Secure the battery pack with Velcro as before. Repeat to light both stars. The large star uses 3 light strands and the small star uses 2 strands.



# SCANDINAVIAN Tree



## SUPPLIES FOR THIS PROJECT

### FloraCraft® Make It: Fun® Foam:

- ☐ Sheet: 1"x 12"x 36"

### Other Materials:

- ☐ (2) FloraCraft Smooth Finish®
- ☐ Design Master® Tint It™: Sepia
- ☐ Acrylic Paint: Cream
- ☐ Chunky Yarn:  
Assorted Holiday Colors
- ☐ Thin Yarn: Brown
- ☐ Buttons: Assorted Sizes  
Cream or White
- ☐ Toothpicks

### Tools:

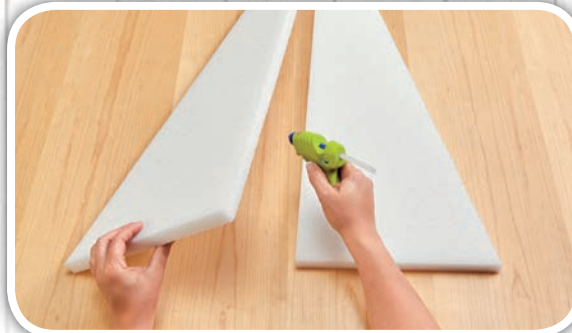
- ☐ Make It: Fun® Foam Tools
- ☐ Low-Temp Glue Gun
- ☐ Scissors
- ☐ Pallet Knife
- ☐ Flat Paint Brush
- ☐ Serrated Knife
- ☐ Fine Sandpaper



## Scandinavian Tree INSTRUCTIONS:

STEP

1



Draw a straight line from opposite corners across the length of the sheet. Cut the sheet in half. Lay the two halves together along the factory edges to create the tree shape. Glue the pieces together. Insert toothpicks in between for a stronger hold.

STEP

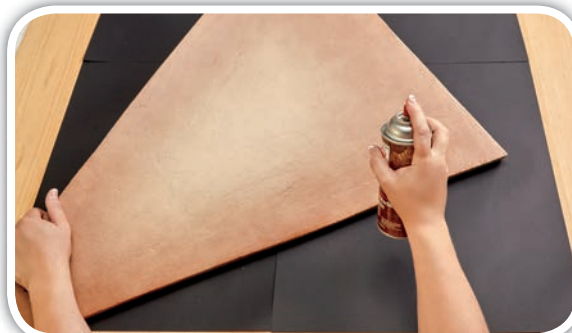
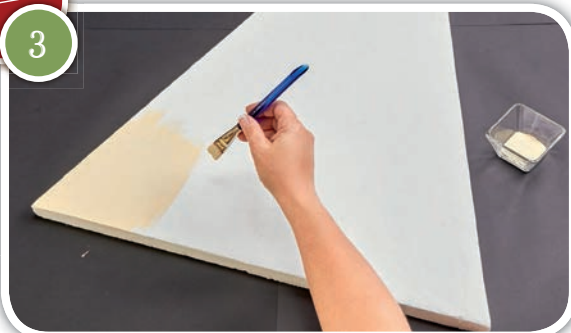
2



Use the pallet knife to apply an even coat of Smooth Finish® to the front and sides of the tree. Let dry and sand lightly to smooth as needed. Apply a second coat. Let dry and sand smooth.

STEP

3



Brush on a coat of cream paint and let dry. Spray Tint It™ Sepia around the outside edges of the tree. Apply heavier coverage towards the outside edge to create an aged look. Let dry.

## Scandinavian Tree INSTRUCTIONS:

STEP

4



Draw your desired design in pencil on the tree. Draw very lightly so you do not indent lines into the tree. Lay the end of the yarn at the beginning of the design. Use the tuck tool to tuck the end of the yarn into the foam. Do not push the tuck tool in very far or you will create too big of a hole. If the yarn doesn't stay when you remove the tool, tuck in a little more until it stays. Follow the stitching along the design, tucking the yarn for each stitch. Zigzag stitch the yarn back and forth within a shape to fill in solid with yarn.

STEP

5



Make a large pom-pom from all the yarn colors and glue to the top of the tree. Make several small tassels from the yarn and glue them hanging from the bottom of the tree. Embellish the tree with buttons.



# HO HO HO FAUX-STITCHED Wall Art



## SUPPLIES FOR THIS PROJECT

### FloraCraft® Make It: Fun® Foam:

- ☐ Sheets: (3) 12"x12"x1"

### Other Materials:

- ☐ Acrylic Snow Textured Medium: White
- ☐ Fabric: Plaid
- ☐ Faux Fur Trim: White
- ☐ (6) 1-1/2" Buttons: White
- ☐ 3/8" Satin Ribbon: Red

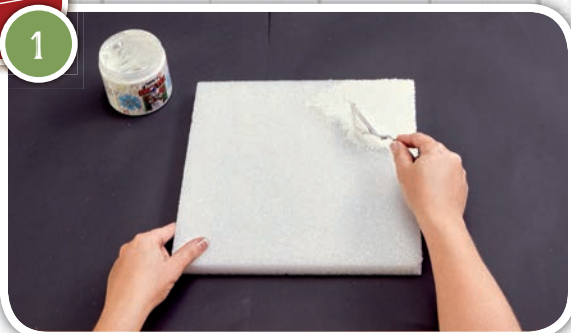
### Tools:

- ☐ Make It: Fun® Foam Tools
- ☐ Low-Temp Glue Gun
- ☐ Scissors
- ☐ Pallet Knife
- ☐ Ruler

# Ho Ho Ho Faux-Stitched Wall Art INSTRUCTIONS:

STEP

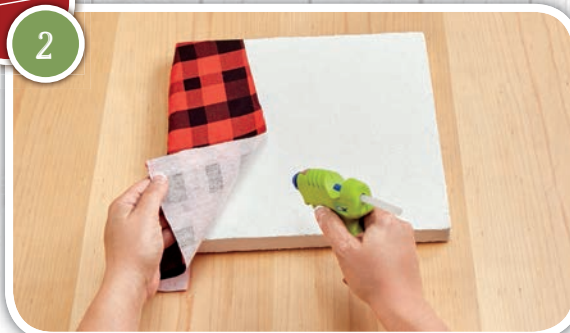
1



Use the pallet knife to apply the snow texture to the top and sides of the foam sheets. Let dry.

STEP

2



Wrap a piece of fabric at an angle around the bottom portion of each foam square as shown. The left side should be about 3" from the bottom and the right side should be about 6" from the bottom. Secure the fabric in place to the back of the foam with glue.

STEP

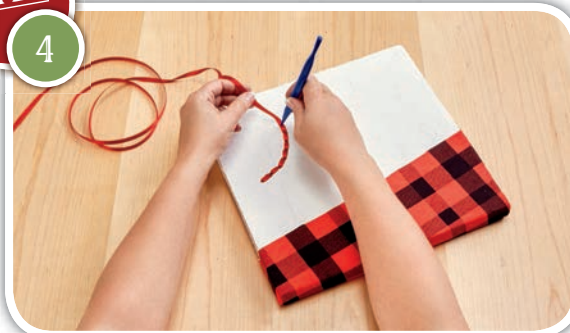
3



Use a pencil to lightly write the message "ho, ho, ho" on the foam squares as shown. Use the tuck tool to "trace" the pencil line with ribbon "stitches".

STEP

4



Lay the ribbon onto the foam and place the tuck tool over the ribbon. Push the ribbon into the foam about  $\frac{1}{2}$ ". Measure up the line about  $\frac{1}{2}$ " and tuck the ribbon in again. Keep going to trace both letters.



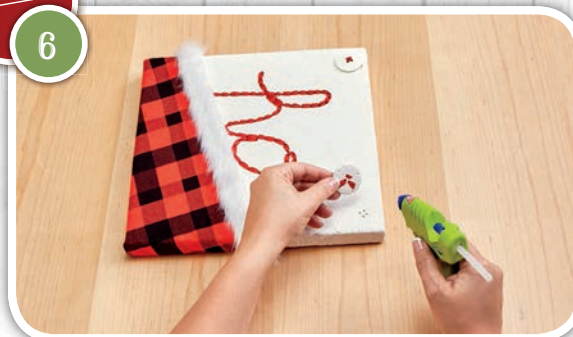
# Ho Ho Ho Faux-Stitched Wall Art INSTRUCTIONS:

STEP  
5



Glue fur trim along the top of the fabric on the three foam squares.

STEP  
6



Thread ribbon through the buttons, trim and glue ribbon ends to the back of the button. Glue the buttons to the top corners of each square. Glue lengths of ribbon to the backs of the foam squares for hangers.



# HOLIDAY Gnomes



Designed by Kim Purvis - [www.madeinaday.com](http://www.madeinaday.com)

## SUPPLIES FOR THIS PROJECT

### FloraCraft® Make It: Fun® Foam:

- ☐ Cones: 9", 12" and 15"
- ☐ Balls: (3) 1"

### Other Materials:

- ☐ Small Check Fabric: Black/Tan and Red/Tan
- ☐ Faux Suede: Caramel Color
- ☐ Faux Fur: (4) Coordinating Colors
- ☐ Felt: Charcoal, Grey, Light Tan and Cream
- ☐ Heavy Gauge Wire

### Tools:

- ☐ Low-Temp Glue Gun
- ☐ Scissors
- ☐ Sharp Craft Knife
- ☐ Black Marker



# Holiday Gnomes

## INSTRUCTIONS:

STEP

1



Firmly roll the bottom edge of the cones on the table to taper them at the bottom.

STEP

2



Cut a 14"x6-1/2" piece of charcoal felt. Wrap and stretch the felt around the bottom section of the 15" cone. Trim the felt along the seam at the back and glue neatly in place. Trim the felt along the bottom edge of the cone and glue in place. Cut an 11"x4-1/2" piece of grey felt to cover the bottom section of the 12" cone. Cut an 11"x3-1/2" piece of tan felt to cover the bottom of the 9" cone.

STEP

3



You will need an 8" long x 4" wide piece of fur for the large beard. A 5-1/2" long x 4" wide piece of fur for the medium beard and a 3" long x 3-1/2" wide piece for the small beard. To cut the fur, draw the beard shape on the back of the fur. Use the craft knife razor blade to carefully cut just through the backing of the fur. This will allow the fur to wisp over and hide the cut edge. Be sure the fur is laying in the right direction before you cut.

STEP

4



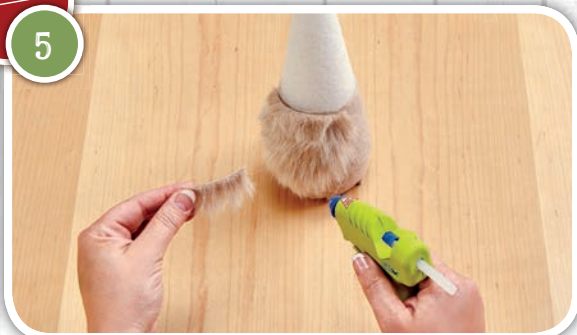
Use your fingers to compress two of the 1" balls down to about half the size. Cut a 3" circle and two 2" circles of cream felt. Wrap each of the three balls with felt to completely cover. Gather all the felt at one side of the ball and trim away excess felt. Glue the edges of the felt in place at the back of the ball. Insert toothpicks into the backs of the balls and glue the noses in place centered above the beards.

# Holiday Gnomes

## INSTRUCTIONS:

STEP

5



Glue the beards to the fronts of the cones along the top edge of the felt. Draw and cut out the mustaches. You will need two 5" long x 1" wide pieces for the large gnome. Glue these two pieces on each side of the nose. Cut two 2" long x 1/2" wide pieces for the medium gnome and glue to either side of the nose. Cut one 3/4" long x 2" wide piece for the small gnome. Glue this piece centered under the nose.

STEP

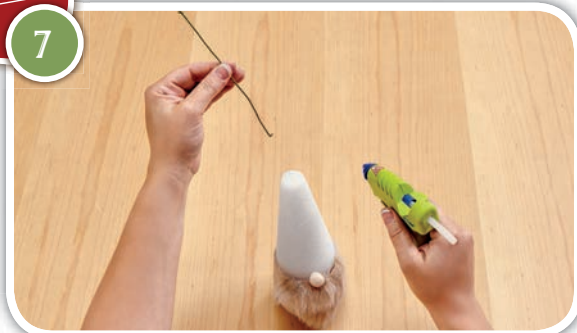
6



Cut the small and medium hat templates from the small check fabrics. Glue the fabric together along the seam to create the cone shaped hats. Cut the large hat template from the suede fabric. Glue a length of 1" fur trim along the bottom inside edge of the large hat. Glue the suede together along the seam to create the large fur trimmed hat.

STEP

7



Cut a 4" piece of wire and glue it into the top of the 9" gnome. Cut a 5" piece and glue it into the top of the 12" gnome. Glue a 7" piece of wire into the top of the 15" gnome. Roll up the bottoms of the small and medium hats and place them on the gnomes. Pull the hats down over the noses slightly. Place the large hat on the large gnome with the fur trim pulled slightly over the nose. Bend the wires in the tops of the hats to position the hats as desired.

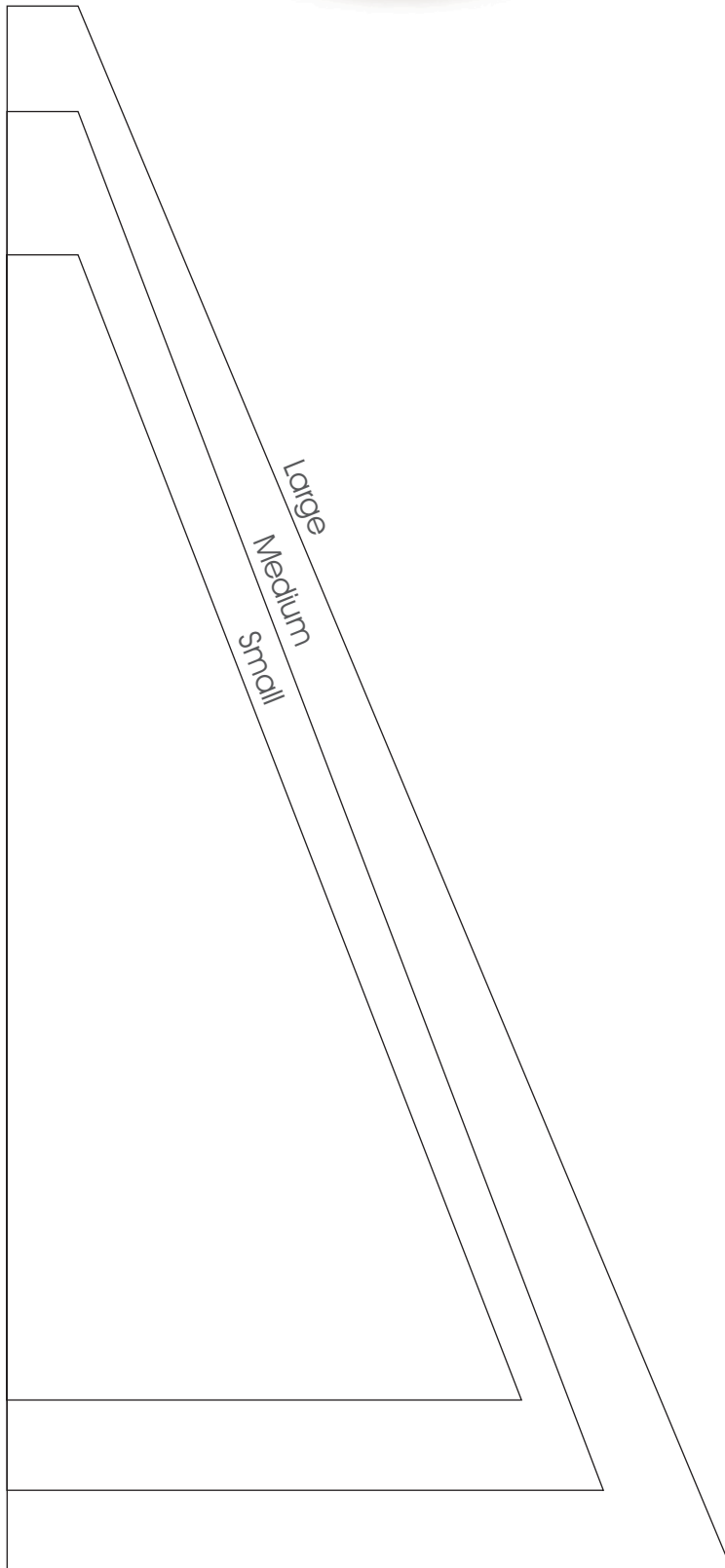




HOLIDAY  
*Gnomes*  
TEMPLATE



Print Template at 200%





# LET IT SNOW Wreath



## SUPPLIES FOR THIS PROJECT

### FloraCraft® Make It: Fun® Foam:

- ☐ Wreath: 16"

### Other Materials:

- ☐ 45"x8" Jersey Fabric: Red
- ☐ 48"x6" Rolled Quilt Batting
- ☐ Sequins: White
- ☐ Sequin Pins
- ☐ Yarn: White

- ☐ (3) Canvas Tags: White
- ☐ 1/2" Ribbon: White
- ☐ Marker or Paint Pen: Black

### Tools:

- ☐ Low-Temp Glue Gun
- ☐ Scissors



# Let It Snow Wreath

## INSTRUCTIONS:

STEP

1



Wrap the batting around the front and sides of the wreath to completely cover. Trim so that the ends meet but do not overlap. Trim the batting even with the back edge of the wreath.

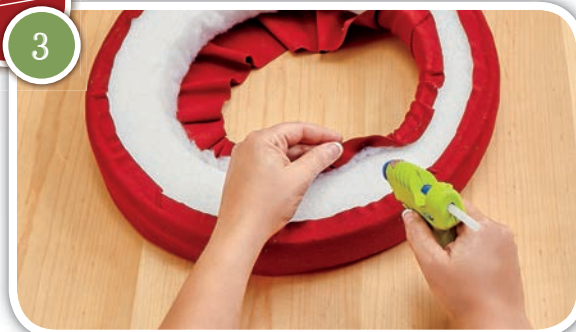
STEP

2

Wrap the jersey fabric over the wreath. Allow for a 1" overhang around the outside. Begin gluing the overhang to the back. Keep the fabric even as you go. Glue the end again where you stop, slightly overlapping the fabric.

STEP

3



Pull the fabric snug through the inside of the wreath and wrap to the back. Glue the fabric around the back edge as you go. Pull out as many wrinkles as possible. Pleat the fabric evenly around the wreath for a uniform look.

STEP

4



Begin pinning the sequins in place as shown to look like falling snow. Pin the sequins sporadically towards the top of the wreath. Pin them thicker and more condensed as they accumulate at the bottom of the wreath.

STEP

5



Use a marker or paint pen to write your message on the canvas tags. Tie lengths of yarn to the tags and sequin pin them hanging from the inside of the wreath. Tie lengths of ribbon around the yarn at the top of the tags to embellish.





# SPARKLING Nativity



## SUPPLIES FOR THIS PROJECT

### FloraCraft® Make It: Fun® Foam:

- ☐ Sheets: 1"x12"x18" and 1/2"x12"x12"

### Other Materials:

- ☐ Acrylic Paint: White and Gold
- ☐ Glitter: Gold
- ☐ Fine Glitter Dust: Iridescent and Gold
- ☐ Spray Sealer: Clear
- ☐ Craft Sticks
- ☐ Toothpicks

### Tools:

- ☐ FloraCraft® StyroCutter® Plus
- ☐ Low-Temp Glue Gun
- ☐ Serrated Knife
- ☐ Ruler
- ☐ Sequin Pins
- ☐ Monofilament Line



# Sparkling Nativity INSTRUCTIONS:

STEP

1



Cut two 2"x18" and two 2"x12" pieces from the 1" foam sheet for the roof and walls. Cut one 4-1/2"x12" piece from the 1/2" foam sheet for the base.

STEP

2



Lay the roof pieces on the 1" edge angled end to end to create the roof shape. Cut angles in the roof piece ends so that they come together flush at the peak of the roof. The bottom corners of the roof should measure about 24" apart. Glue the roof pieces together. Insert a toothpick between the pieces for added support.

STEP

3



Lay the two wall pieces under the roof about 4" in from each end. Angle the walls in slightly at the bottom. The gap between the walls should be about 10-1/2" at the bottom. Lay the roof over the tops of the walls and trace the pitch of the roof on each wall. Cut the marked angles in the walls so they come together flush with the roof. Glue the walls in place. Insert a toothpick between the pieces for added support. Draw a line straight across the bottom of each wall piece so they stand flat against the table. Cut a 1/2"x 1/2" notch out of each inside corner of the walls. This is where you will insert and attach the base.

STEP

4



Paint the roof and walls gold. While the paint is still wet sprinkle with gold glitter. The paint will secure the glitter in place as it dries. Once completely dry; spray with a clear sealer to help prevent glitter from flaking off.



# Sparkling Nativity INSTRUCTIONS:

STEP

5



Cut out the paper templates and pin them to the remaining 1/2" foam sheet. Follow the instructions on the StyroCutter® Plus packaging to cut the shapes from the foam.

STEP

6



Paint the base and the Joseph, Mary and Baby Jesus silhouettes white. While the paint is still wet sprinkle with iridescent glitter. Paint the craft sticks and the star gold. While the paint is still wet, sprinkle with gold glitter. Let dry completely.

STEP

7



Glue the walls and roof to the base.

STEP

8



Crisscross two craft sticks under the baby silhouette. The foam cutout should nest between the craft sticks as shown. Glue to secure the craft sticks together.

STEP

9

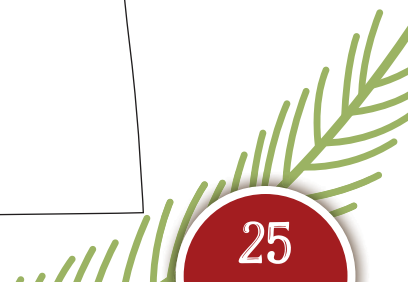
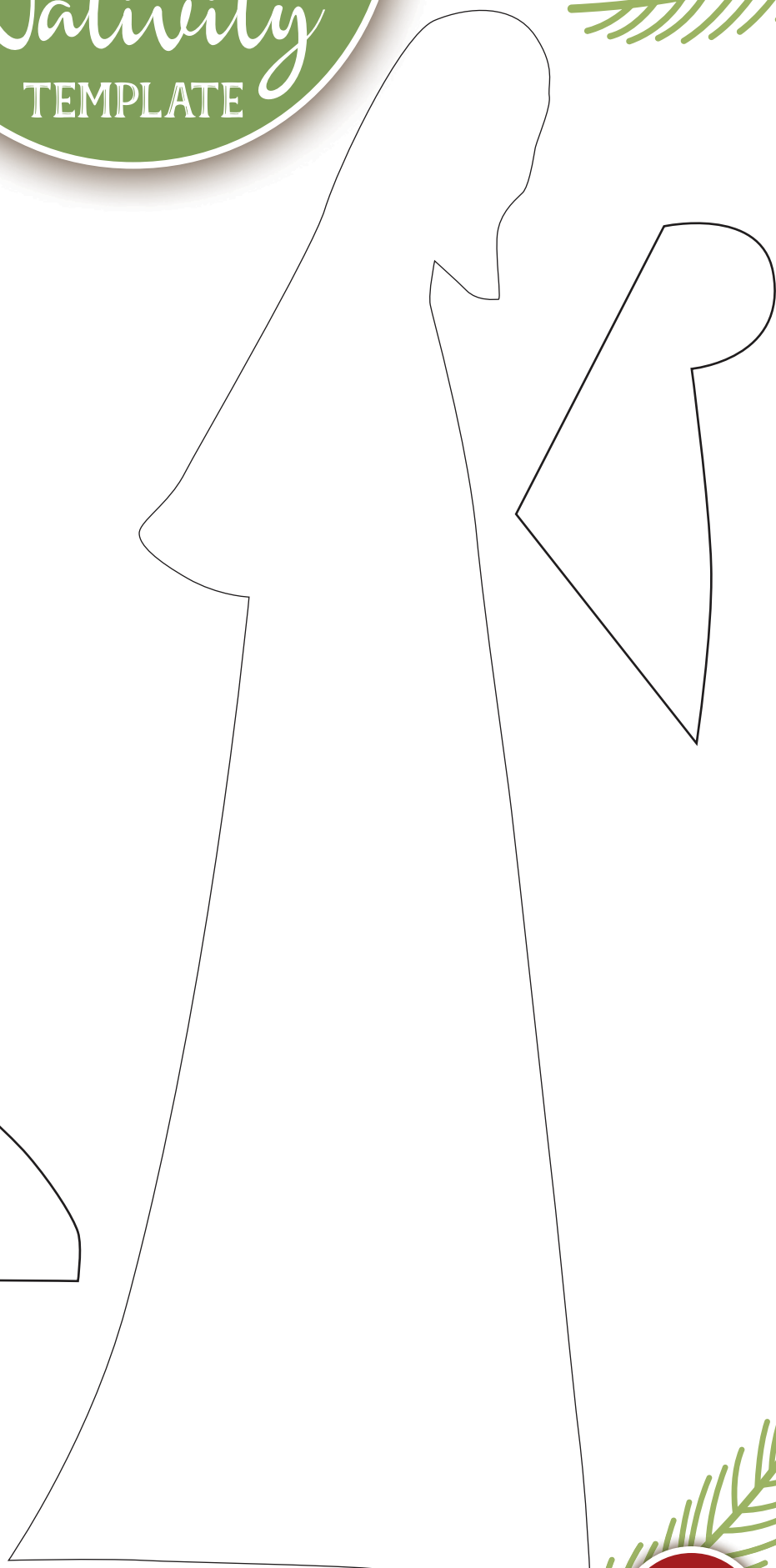
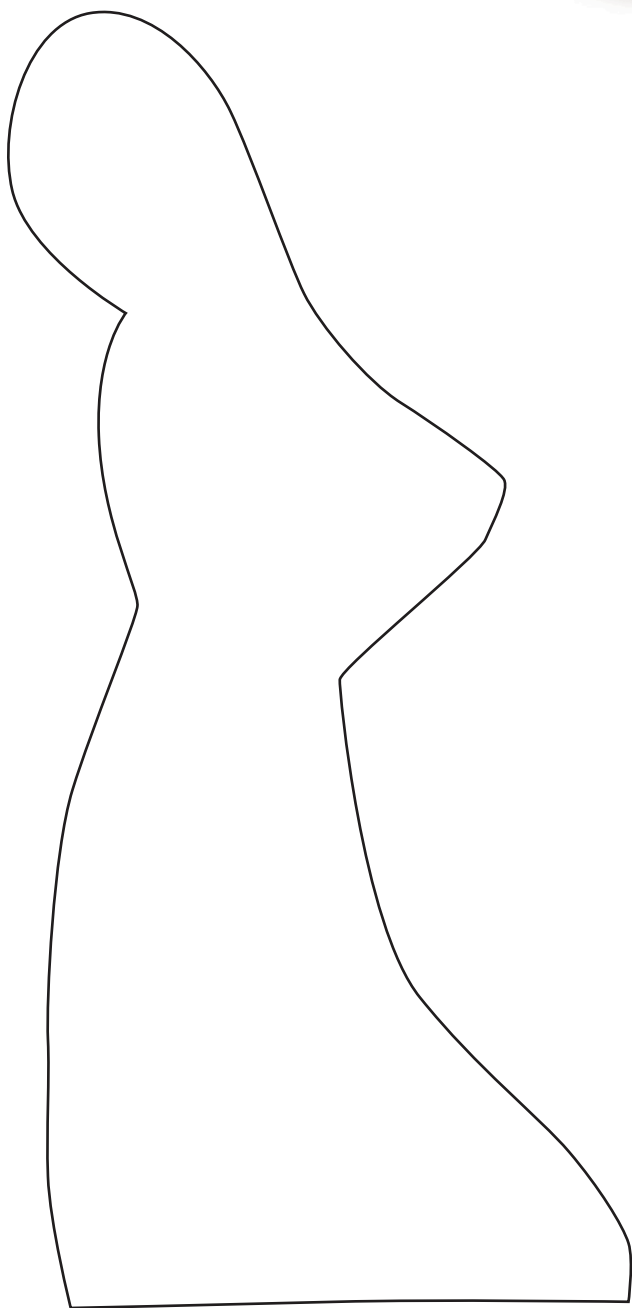


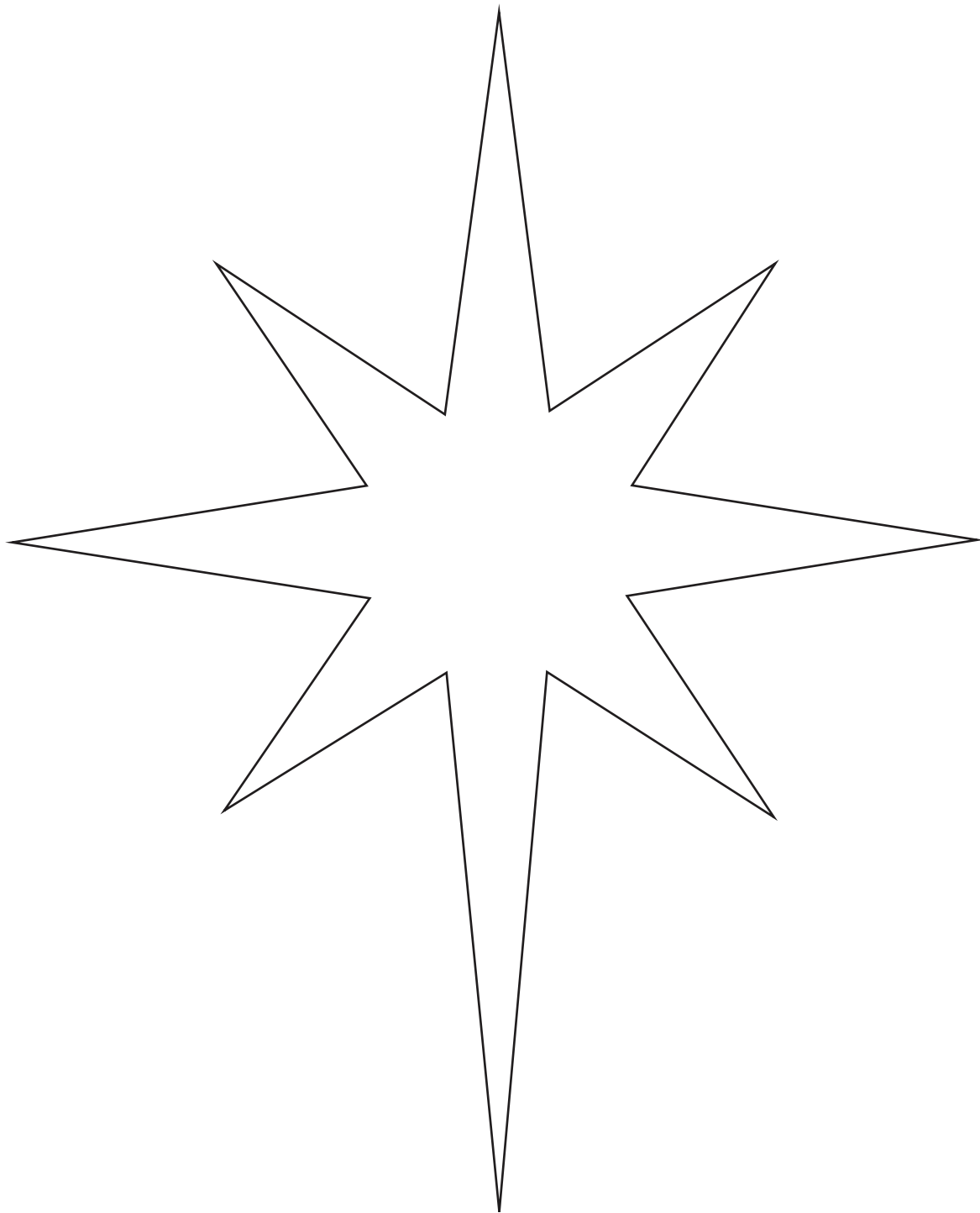
Press the craft sticks into the base at the front of the nativity. Secure in place with glue. Glue the other two silhouettes standing on either side of the baby. Hang the star above the nativity with monofilament line.





SPARKLING  
*Nativity*  
TEMPLATE









# Snowman DOOR DÉCOR



## SUPPLIES FOR THIS PROJECT

### FloraCraft® Make It: Fun® Foam:

- ☐ Discs: 10", 8" and 6"

### Other Materials:

- ☐ Cable Knit Sweater or Fabric: White
- ☐ Flannel Plaid Fabric: Red/Black
- ☐ Faux Fur Trim: White
- ☐ Yarn: White
- ☐ Felt: Orange
- ☐ Thin Wire: Black

- ☐ (2) Black Buttons
- ☐ Rolled Batting
- ☐ Craft Sticks

### Tools:

- ☐ Low-Temp Glue Gun
- ☐ Scissors
- ☐ Wire Cutters
- ☐ Serrated Knife
- ☐ Ruler



# Snowman Door Décor

## INSTRUCTIONS:

STEP

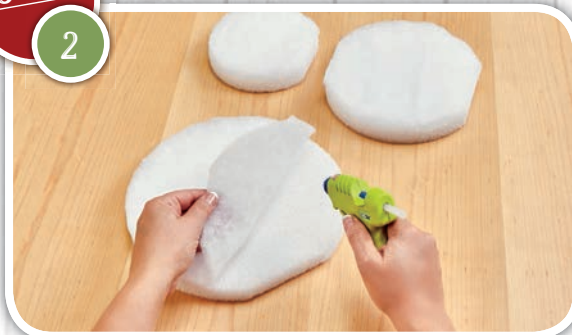
1



Cut a small flat spot off one side of the 10" disc and the 6" disc. Cut a flat spot off opposite sides of the 8" disc. This will allow the discs to nest together nicely.

STEP

2



Cut batting to cover just the fronts of all three discs. Glue in place and trim the excess batting to fit around the edge.

STEP

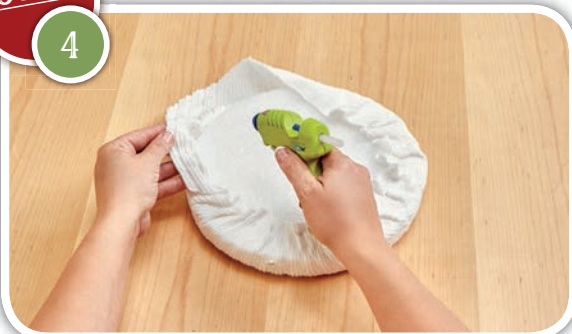
3



Cut a 14", 12" and 10" circle out of the cable knit fabric. Lay the knit circles face down. Center the discs, batting side down, onto the knit circles.

STEP

4



Make sure that the cable knit lines run perpendicular to the flat spots on the discs. This will ensure that the cable knit lines up correctly. Wrap the edges of the knit circles up around the discs and glue in place at the back.

STEP

5



Cut a slit through the cable knit in the center of the flat spot on the 10" disc. Glue a craft stick half way into the disc. Cut a slit into the flat spots on the top and bottom of the 8" disc. Attach the 8" disc to the 10" disc by inserting the craft stick into the 8" disc. Glue to secure. Repeat to attach the 6" disc to the 8" disc.



## Snowman Door Décor INSTRUCTIONS:

STEP

6



Cut 8" off the end of the sweater sleeve for the hat or roll fabric into a tube. Gather at the hole and glue to secure.

STEP

7



Glue the fur trim around the cut end of the hat and then stuff with batting. Use the yarn to make a pom-pom for the top of the hat and glue in place. Glue the hat onto the snowman's head.

STEP

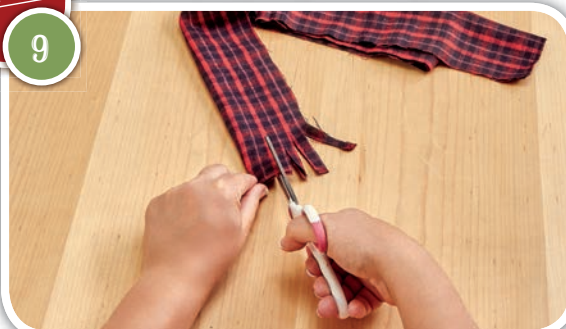
8



Cut a triangle nose from the orange felt and glue in place along with the button eyes. Cut a length of black wire and bend into a squiggle for the mouth. Poke the ends of the wire through the cable knit to secure in place.

STEP

9



Cut a 45" long x 5" wide piece of flannel for the scarf. Glue the flannel along the 45" edges to form a long tube. Cut slits in the ends of the flannel tube to create fringe. Tie the scarf around the snowman's neck.



# PLAID DEER Wall Art



## SUPPLIES FOR THIS PROJECT

### FloraCraft® Make It: Fun® Foam:

- ☐ Sheets: (2) 1"x12"x18"

### Other Materials:

- ☐ Plaid Fabric: (28"x22")
- ☐ White Felt: (24"x18")
- ☐ 7/8" Satin Ribbon: Black
- ☐ Heavy Jute Twine
- ☐ Permanent Adhesive Spray

### Tools:

- ☐ FloraCraft® StyroCutter® Plus
- ☐ Low-Temp Glue Gun
- ☐ Scissors
- ☐ Fine Black Marker
- ☐ Straight Pins



## Plaid Deer Wall Art INSTRUCTIONS:

STEP

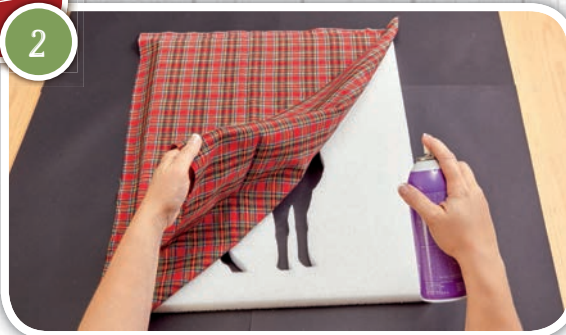
1



Glue the two sheets together along the 18" sides. Cut out the deer template. Pin it centered onto the foam about 2" from the bottom. Follow the package instructions on the StyroCutter® Plus to cut out the deer template from the foam.

STEP

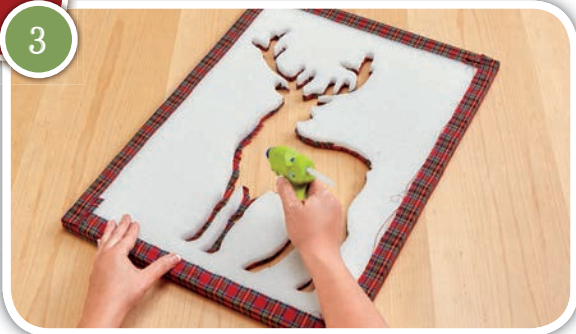
2



Spray an even coat of adhesive to completely cover the top surface of the foam. Lay the fabric onto the foam. Adjust fabric as needed to keep the pattern running straight. Do not pull or stretch the fabric as you work. Smooth out any wrinkles and be sure fabric is held in place securely. Glue the outside edges of the fabric to the back of the foam. Fold the corners neatly.

STEP

3



Use small scissors to remove the fabric from the deer cut-out. You will need to leave about a 1/4" fabric allowance around the edge of the cut-out. Cut small slits in the fabric around the antler areas to allow the fabric to lay nicely in the curved edges of the cut-out. Glue the fabric to the inside edge of the foam all the way around the deer cut-out using the glue gun.

STEP

4



Glue the black ribbon around the inside edge of the cut-out to conceal the fabric edge.

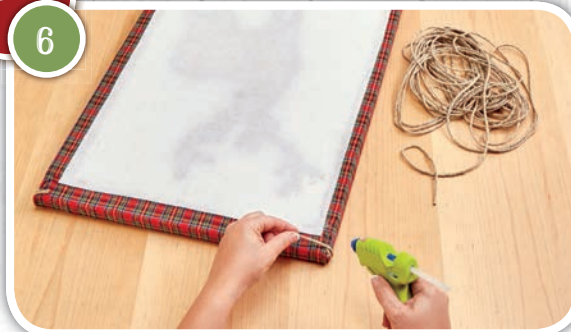
## Plaid Deer Wall Art INSTRUCTIONS:

STEP  
5



Glue the felt to the back of the foam.

STEP  
6



Weave lengths of jute along the top and left sides of the wall art. Glue the jute at the back of the foam to secure.

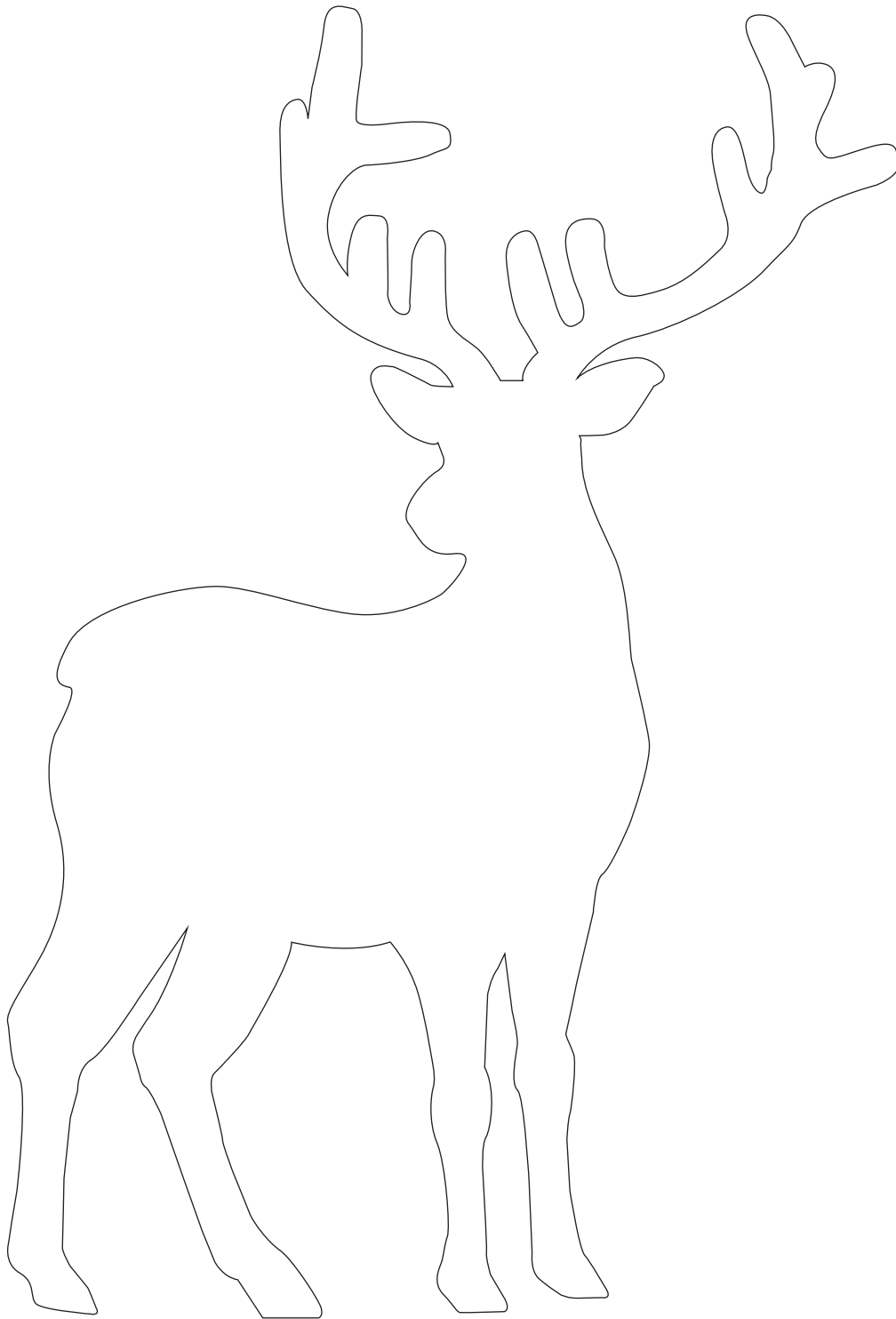




PLAID DEER  
*Wall Art*  
TEMPLATE



**Print Template at 200%**



# SHATTER-PROOF Ornaments



## SUPPLIES FOR THIS PROJECT

### FloraCraft® Make It: Fun® Foam:

- ☐ Balls: 4", 3" and 2-1/2"

### Other Materials:

- ☐ Makin's Clay® Air Dry Polymer Clay
- ☐ Acrylic Paint: White
- ☐ Paint Pen: Black

### Tools:

- ☐ Flat Paint Brush
- ☐ Rolling Pin
- ☐ Non-Stick Mat



# Shatter-Proof Ornaments

## INSTRUCTIONS:

STEP

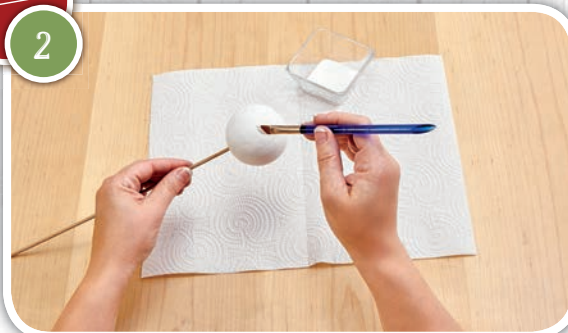
1



Roll out sections of clay large enough to wrap around the balls. Roll the clay out so it is thin and even. Wrap the clay around the balls. Trim excess clay from ball. Smooth seams where the clay overlaps. Let dry completely.

STEP

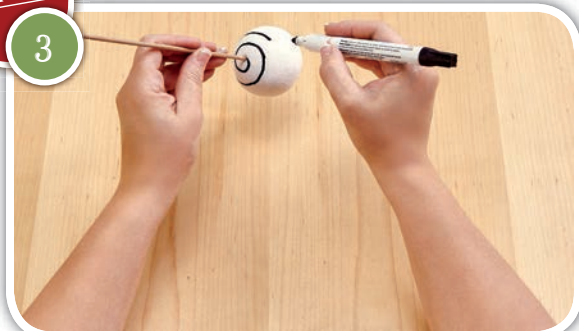
2



Paint the balls white and let dry.

STEP

3



Use the paint pen to embellish the balls with dots or spirals as desired.



# SNOWFLAKE String Art



## SUPPLIES FOR THIS PROJECT

### FloraCraft® Make It: Fun® Foam:

- ☐ Sheets: (3) 1"x12"x12"

### Other Materials:

- ☐ (1 yd) Velvet Fabric: Blue
- ☐ Metallic Yarn: Silver/White
- ☐ Sequin Pins: 1"

### Tools:

- ☐ Low-Temp Glue Gun
- ☐ Scissors
- ☐ Serrated Knife
- ☐ Black Marker
- ☐ Ruler



# Snowflake String Art INSTRUCTIONS:

STEP

1



Measure 3-1/2" in from each corner of the foam sheets and make a mark. Draw a line across each corner at the marks. Use the serrated knife to cut the corners off evenly.

STEP

2



Cut three 16" squares of velvet fabric. Lay the fabric face side down and lay the foam in the center. Pull the edges of the fabric up over the foam and glue in place at the back. Fold the corners neatly for a clean look. For a uniform look be sure that the nap of the velvet runs the same direction across all three panels.

STEP

3



Begin pushing the pins into the foam as indicated on the templates. Use a ruler as a guide to keep the pins running straight and evenly spaced.

STEP

4



Tie the end of the yarn to a center pin. Wrap the yarn around each pin from one to the next up the row of pins. Follow the template as indicated to create the pattern. When you reach the end pin, turn back and follow the pins back down the row. Wrap the yarn around the center pin at the next row and wrap the yarn around the pins to the end and back. Repeat to string all three panels.

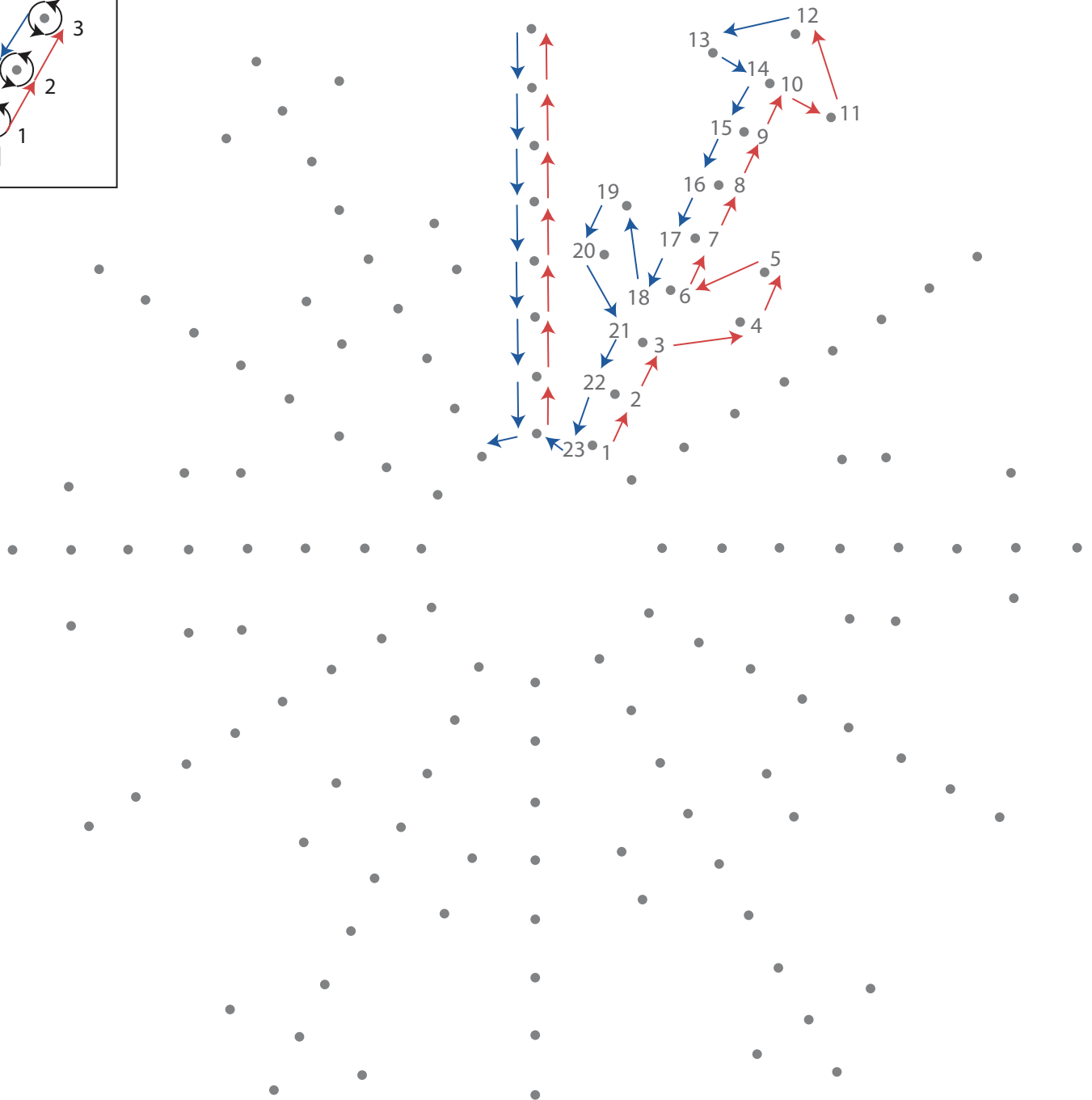
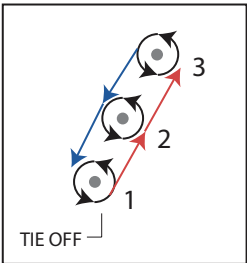


# SNOWFLAKE String Art TEMPLATE

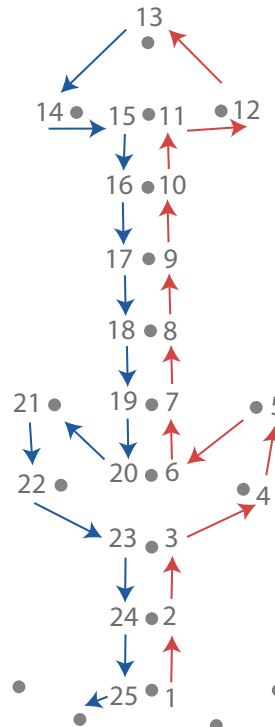


Print Template at 125%

ALWAYS WRAP TO THE  
RIGHT SIDE OF THE PIN









# Spiral SNOWMAN



## SUPPLIES FOR THIS PROJECT

### FloraCraft® Make It: Fun® Foam:

- ☐ Discs: (2) 3"x1"
- ☐ Balls: (2) 2"
- ☐ Sheet: 12"x12"x½"
- ☐ Cone: 9"

### Other Materials:

- ☐ (2) 6-½ ft. Jumbo Chenille Stem: White
- ☐ Acrylic Paint: White
- ☐ Iridescent Fine Glitter

- ☐ Thin Wood Dowels: 10" and 6" Lengths
- ☐ Rosette Fabric Trim: White/Black Polka Dot
- ☐ Tiny Black Eyes
- ☐ Tiny Pompom: White
- ☐ Thin Wire: Black

### Tools:

- ☐ Low-Temp Glue Gun
- ☐ Scissors



# Spiral Snowman INSTRUCTIONS:

STEP

1



Draw a small star shape, about 2-1/2", onto the 1/2" foam sheet. Use the knife to cut out the star shape. Roll one 2" ball firmly back and forth on the table to create a barrel shape for the hat.

STEP

2



Paint the hat, the 2" ball head, the two discs, the star and the wood dowels white.

STEP

3



Paint them one at a time and while they are still wet sprinkle each part with glitter. The paint will secure the glitter in place as it dries.

STEP

4



Insert the wood dowels into the middle of the discs. Glue to secure in place. Glue the star to the top of the 6" dowel and glue the 2" head to the top of the 10" dowel.

STEP

5



Double the chenille stem and twist it together to create one thick 3ft. piece of stem. Spiral the stem around the 9" cone to form the shape. Remove the cone and place the chenille spiral over the 10" dowel. Glue the top of the spiral to the top of the dowel under the head. Secure the bottom of the dowel at the back of the disc.

## Spiral Snowman INSTRUCTIONS:

STEP

6

Cut the second chenille stem in half. Double the chenille stem and twist it together to create one 18" length. Spiral the stem around the cone as before to create the shape. Place the chenille spiral over the 6" dowel. Glue in place under the star. Glue the bottom of the spiral to the top back of the disc.

STEP

7



Cut a piece of fabric trim to glue around the disc of the tree and around the neck of the snowman.

STEP

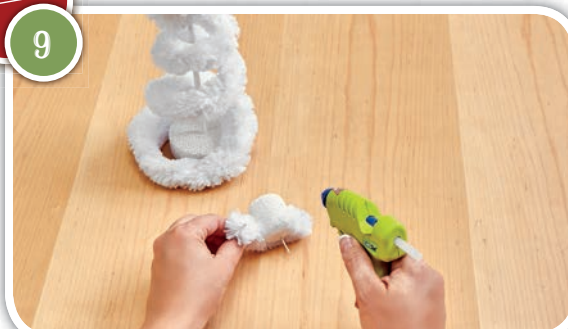
8



Glue the eyes and the pom-pom nose in place. Bend a squiggle in a length of wire for the mouth. Bend the ends of the mouth inward toward the face. Insert the ends of the wire into the face and secure with glue.

STEP

9



Cut a length of chenille stem to glue around the base of the hat. Glue the hat in place on top of the head.



# TIPS & TECHNIQUES

## FOR CRAFTING WITH FLORACRAFT® MAKE IT: FUN® FOAM



*Paint it*

Most acrylic paints will work well on FloraCraft® Make It: Fun® Foam. When spray painting, hold can upright approximately 12-18" from the foam and spray light, even coats. Spraying too close, or too heavy of a coat could melt the foam. Let dry between coats. For easier handling when painting, insert a toothpick or skewer into the foam shape to use as a handle.

*Glue it*

Want a fast, sure bond? Use a low-temperature glue gun. StyroGlue® or white craft glue has a longer dry time, but will still create a sure bond. For a better bond and to help hold pieces together while drying, insert a toothpick between the pieces before pressing them together. For instant tack, glue both surfaces and allow to dry slightly before pressing together.



*Cut it*

FloraCraft® Make It: Fun® Foam cuts easily with the Foam Cutter, StyroCutter®, StyroCutter® Plus, a serrated knife, or even cookie cutters. Wax the knife blades with an old candle for easier, smoother cuts. To cut a thick piece of foam, or several sheets stacked together, use an electric knife.

*Texture it*

Cover FloraCraft® Make It: Fun® Foam shapes with stucco and make patterns like swirls or petals. Try using plaster, gesso, air-dry clay, modeling paste, drywall joint compound, paper clay, decoupage or paste for various textures and effects. For outdoor use, tile grout works great!



*Sand it*

FloraCraft® Make It: Fun® Foam acts like fine sand-paper when rubbed together. For smooth, rounded edges, rub the foam with another piece of foam. To shape larger pieces, cut out the basic shape and then sand the final details into the shape.

For more project ideas, visit  
**MAKEITFUNCRAFTS.COM**

1 W. LONGFELLOW PLACE | LUDINGTON, MI 49431 | [www.floracraft.com](http://www.floracraft.com)



Stay connected using **#makeitfuncrafts**

**FLORACRAFT®**